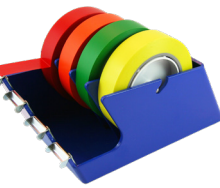




# UltraTape®

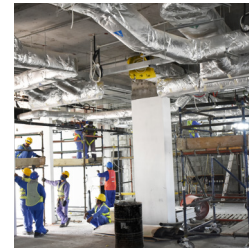
Adhesive Tape & Labels for Critical Environments



## CLEANROOM LABELS

UltraTape has a line of specialty cleanroom construction labels that can be customized for your specific application. Our cleanroom labels are available in a variety of low-outgassing, particle-free, residue-free facestocks, liners and adhesives. Whether you're looking for chemical resistance, high temperature, or special shapes and sizes, UltraTape can create a label that fits your needs.

- GHS Labels
- Harsh-Environment Labels
- Die-Cut Labels
- Write-and-Seal Labels
- Direct Thermal and Thermal Transfer Labels



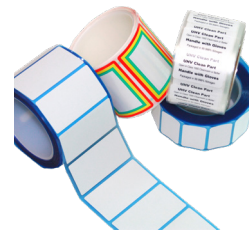
## CLEANROOM LABEL PRINTERS AND RIBBONS

UltraTape's UltraLabel PRO™ 300 and 600 DPI printers are specifically designed for critical environments. The printers are available in both standard and high-resolution options and support a range of label-making applications including barcoding, serialization, inventory-control identification, product labels, pipe markers and GHS labels. The UltraLabel PRO is compact and versatile and can easily be integrated into any cleanroom environment. The printer and all related supplies are cleanroom certified and packaged to keep them free from contaminants.



### COLOR KEY

|                                |                    |                             |                          |
|--------------------------------|--------------------|-----------------------------|--------------------------|
| BK ..... Black                 | BZ ..... Bronze    | OR ..... Orange             | TR ..... Transparent Red |
| BL ..... Blue                  | CL ..... Clear     | PR ..... Purple             | WH ..... White           |
| BR ..... Brown                 | GR ..... Green     | RE ..... Red                | YE ..... Yellow          |
| BW ..... Black & White Stripe  | GY ..... Gray      | RW ..... Red & White Stripe |                          |
| BY ..... Black & Yellow Stripe | OB ..... OSHA Blue | TB ..... Transparent Blue   | Blue & White (1153)      |



# UltraTape®

Adhesive Tape & Labels for Critical Environments

9770 SW Wilsonville Road, Suite 400  
Wilsonville, OR 97070  
www.cleanroomtape.com

503.427.2880  
503.482.5616



©2022 UltraTape. UltraTape and UltraLabel PRO are trademarks or registered trademarks of UltraTape. All other names are trademarks of their respective companies.

Rev A 2022

A Delphon Company

# DELPHON

## Cleanroom Construction Tape



## CLEANROOM CONSTRUCTION TAPE

The key to any construction project is in the execution. Selecting the right products for the job is especially important when contamination control is a concern. UltraTape, a Delphon company, is the world's leading provider of adhesive tape and label products for critical environments. We work closely with you to deliver highly durable construction tape and label products that are particle-free and leave no residue. By leveraging our expertise in adhesives and substrates with our extensive converting capabilities, we deliver you customized solutions for even the most unique applications.

Tapes and labels are available in Classic Clean and UltraClean® and come individually bagged on a plastic core.



### CLASSIC CLEAN

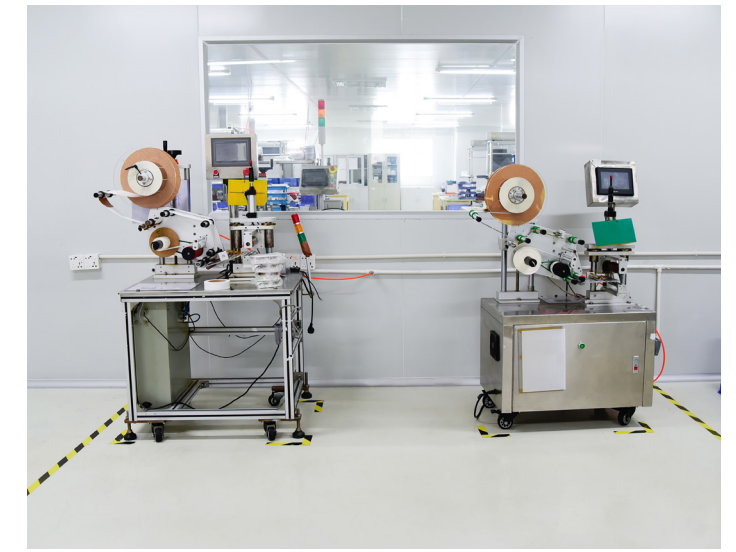
- Ideal for keeping products safe from environmental contamination prior to use
- Suitable for cleanrooms ranging from Class 10,000 (ISO Class 7) to Class 100,000 (ISO Class 8)

### ULTRACLEAN

- Offer the highest level of cleanliness available for today's critical environments
- Suitable for cleanrooms ranging from Class 1 (ISO Class 3) to Class 1,000 (ISO Class 6)
- Inspected and individually double bagged and sealed in cleanroom polyethylene bag

### IRRADIATED

- UltraTape's tape and label products can be irradiated and delivered with full certification of irradiation and lot traceability.



## GENERAL-PURPOSE CONSTRUCTION TAPES

**Construction Tape.** Our construction tapes, available in medium and high adhesion, quickly bond to all surfaces, including plastic, concrete and stainless steel. Users can tear the tape by hand and write on it with a cleanroom pen. (P/N: 1153, 1154, 1160)

**Floor-Marking Tape.** Our floor-marking tapes, available in both striped and solid colors, are designed to withstand high traffic and frequent cleaning. Available in a variety of substrates and adhesives, these highly durable tapes are abrasion and chemical resistant. (P/N: 1165, 1167, 1186, 1188, 2286, 4440, 4425)

**Color-Coding Tape.** Our color-coding and marking tapes, available in a variety of substrates and adhesives, are ideal for cleanroom maintenance and support areas. (P/N: 1153, 1160, 2265, 2286, 4425)

**Electrical Tape.** Our vinyl electrical tape is a premium-grade, all-weather insulating tape with an aggressive pressure-sensitive rubber adhesive that provides moisture-tight electrical and mechanical protection with minimum bulk. This product is certified by Underwriters Laboratories (UL) to conform to the Canadian Standards Association (CSA). (P/N: 1161)

**Barrier Tape.** Our cleanroom barrier tapes provide a way to block off or secure dangerous areas to help prevent accidents and keep people safe. These non-adhesive tapes are made of polyethylene film on plastic cores and printed with easy-to-read letters. Available with "Caution" or "Danger Do Not Enter" prints. (P/N: 4421, 4422)

**Flame-Retardant Tape.** This premium-quality PCV-backed tape with a flame-retardant rubber adhesive system is non-corrosive and resistant to fire. (UL 510 Listed) (P/N: 2293)

| Product | Backing   | Adhesive | Adhesion   | Classic Clean | UltraClean | Clean Removal | Available Colors                                 |
|---------|---|----------|------------|---------------|------------|---------------|--|
| 1153    | Polyethylene  | Rubber   | 60 oz./in. | ✓             | ✓          | ✓             | BK, BL, CL, GR, OR, RE, WH, YE, BW               |
| 1154    | Polyethylene  | Rubber   | 25 oz./in. | ✓             | ✓          | ✓             | WH   |
| 1160    | Vinyl   | Rubber   | 18 oz./in. | ✓             | ✓          | ✓             | BK, BL, BR, CL, GR, GY, OB, OR, PR, RE, WH, YE,  |
| 1161    | Vinyl   | Rubber   | 28 oz./in. | ✓             | ✓          |               | BK   |
| 1165    | Polyester Overlaminated on Vinyl                      | Rubber   | 21 oz./in. | ✓             | ✓          |               | BY, BW, RW, GW                                   |
| 1167    | Embossed Vinyl  | Acrylic  | 44 oz./in. | ✓             | ✓          |               | BK, GY   |
| 1186    | Vinyl base/PET Overlaminated                          | Acrylic  | 40 oz./in. | ✓             | ✓          |               | BK, BL, GR, OR, RE, WH, YE                       |
| 1188    | Vinyl base/PET Overlaminated w/liner                  | Acrylic  | 32 oz./in. | ✓             | ✓          |               | BK, BL, GR, RE, WH, YE                           |
| 2265    | ESD Vinyl base/PET Overlaminated w/printed ESD Symbol | Acrylic  | 17 oz./in. | ✓             | ✓          |               | BL, BK, GR, RE, RW, OR, WH, YE, BY, BW           |
| 2286    | ESD Vinyl base/PET Overlaminated                      | Acrylic  | 17 oz./in. | ✓             | ✓          |               | BL, GR, RE, WH, YE                               |
| 2293    | Vinyl   | Rubber   | 20 oz./in. | ✓             | ✓          |               | GY   |
| 4421    | Polyethylene  | N/A      | N/A        | ✓             | ✓          |               | Yellow with Black "Caution" Print                |
| 4422    | Polyethylene  | N/A      | N/A        | ✓             | ✓          |               | Red with Black "Danger" Print                    |
| 4425    | Pet Overlaminated                                     | Acrylic  | 70 oz./in. | ✓             | ✓          |               | Black and Yellow Stripe - Adhesive on Print Side |
| 4440    | Calendered Vinyl/Polypropylene Overlaminated          | Acrylic  | 24 oz./in. | ✓             | ✓          |               | Yellow with Black "ESD Caution" Print            |



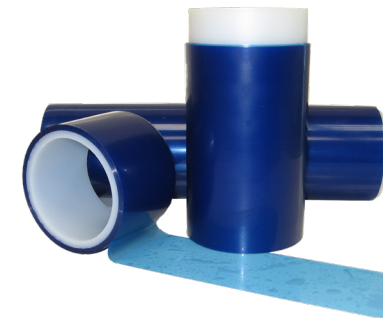
## DOUBLE-SIDED TAPE

**Double-Sided Permanent Adhesion Tape.** This tape is ideal for fastening applications, connecting plastic sheeting or mounting permanent nameplates. Both sides of the polyester carrier have a transparent red Mylar release liner. (P/N: 1510)

**Double-Sided Removable Adhesive Tape.** This removable polyester tape features acrylic double-sided adhesive, has no liner and is ideal for use in a cleanroom tape dispenser. (P/N: 1520, 1530)

**Double-Sided Foam Tape.** We offer a variety of double-sided foam tape in both permanent and removable adhesives. These tapes are flexible and conform easily to uneven surfaces. (P/N: 1410, 1440, 1460)

| Product | Backing                               | Adhesive | Adhesion    | Classic Clean | UltraClean | Clean Removal | Available Colors                  |
|---------|---------------------------------------|----------|-------------|---------------|------------|---------------|-----------------------------------|
| 1410    | Cross-Linked Closed Cell Polyethylene | Acrylic  | 95 oz./in.  | ✓             | ✓          | ✓             | WH                                |
| 1440    | Cross-Linked Closed Cell Polyethylene | Rubber   | 12 oz./in.  | ✓             | ✓          | ✓             | WH                                |
| 1460    | Cross-Linked Closed Cell Polyethylene | Rubber   | 125 oz./in. | ✓             | ✓          |               | WH                                |
| 1510    | Polyester                             | Acrylic  | 90 oz./in.  | ✓             | ✓          |               | Clear - Self Wound                |
| 1520    | UPVC                                  | Acrylic  | 22 oz./in.  | ✓             | ✓          | ✓             | Clear with Red Liner on Wrap Only |
| 1530    | UPVC                                  | Acrylic  | 22 oz./in.  | ✓             | ✓          | ✓             | Clear with Red Liner              |



## SURFACE-PROTECTION TAPE

**Low-Adhesion Surface-Protection Tape.** Our low-adhesion surface-protection tape provides maximum protection to surfaces such as stainless steel, glass, aluminum-coated metal and plastics while allowing for easy, clean removal. (P/N: 1310, 1315)

**High-Adhesion Surface-Protection Tape.** This surface-protection tape offers superior performance on surfaces that are difficult to bond to, while allowing for clean removal. (P/N: 1120, 1312, 1314)

| Product | Backing                | Adhesive | Adhesion   | Classic Clean | UltraClean | Clean Removal | Available Colors |
|---------|------------------------|----------|------------|---------------|------------|---------------|------------------|
| 1120    | Embossed Polypropylene | Rubber   | N/A        | ✓             | ✓          | ✓             | CL, TR           |
| 1310    | Vinyl                  | Acrylic  | 5 oz./in.  | ✓             | ✓          | ✓             | TB               |
| 1312    | Polyethylene           | Acrylic  | 14 oz./in. | ✓             | ✓          | ✓             | CL               |
| 1314    | Polyethylene           | Acrylic  | 11 oz./in. | ✓             | ✓          | ✓             | CL               |
| 1315    | PVC                    | Acrylic  | 5 oz./in.  | ✓             | ✓          | ✓             | TB               |